

Flint & Cap

Newsletter of The New Zealand Antique and Historical Arms Association
Wellington Branch Inc.
P.O. Box 14-029
Kilbirnie, Wellington.
www.nzaawgtn.org.nz

January Meeting 2010

President

Alwyn

Vice President

Terry

Auction Convenor

Steve

Secretary

Treasurer

Margaret

Editor

Glenn

Committee

Rex

John

Vic

John

Bruce

Dave

Scott

Willie

Latest M53 tripod in as new condition.

Soviet orders, a selection of eight different orders form the former USSR.

Painted truncheons, three different types with Crowns and Crests painted on them.

Scarce NZ Navy poster of NZ frigate and helicopters.

Pocket knives, a collection of victorinox knives with relevant literature.

Parrabellum 1908 Military first issue, a Persian contract model with 8 inch barrel, artillery model with snail magazine and a 1941 BYF black widow. Also on display was a Polish Radom pistol in 9mm.

Percussion shotguns with Damascus barrels, also powder flasks and percussion caps.

W. Ottway and Co London marked telescope and a NZ marked compass.

Optical, British made sniper scope No 32 in case plus a brass spotting scope with military markings including its tripod.

Recent acquisition a FN FAL 7.62mm rifle with three magazines to go with it.

Percussion .223 to .58 cal and a collection of cartridges.

Old sword and over and under percussion double barrel pistol by John Cuff of London.

January Meeting Displays

Percussion and pinfire, a selection of percussion cap tins and some pinfire rounds.

Powder hoppers, five powder and shot hoppers form around the world.

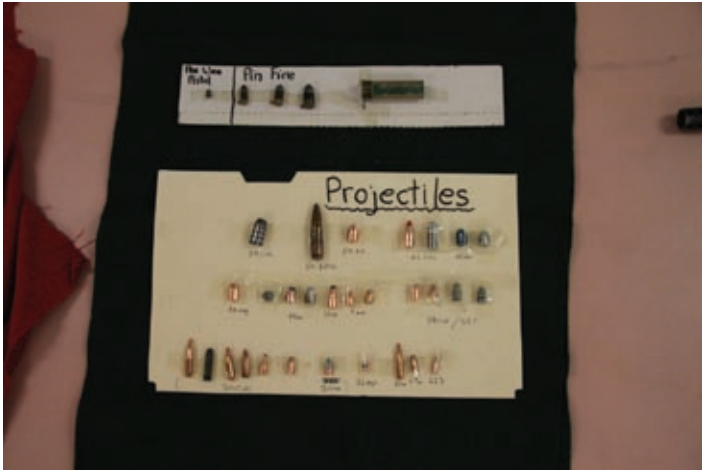
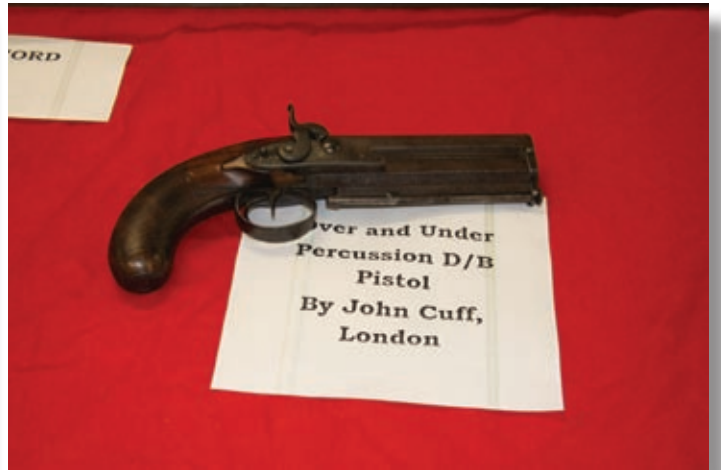
Eric Vincent Purdon's .45 Colt auto brought out from Rhodesia (Purdon was a former LRDG member and was given this weapon by a US pilot and carried it as his personal weapon).

P08, Erfurt made Luger pistol dated 1916 including original holster two magazines and stripping tool.

Polish army helmets, models 1950 to 1975.

Wellington Branch AGM

Wellington Branch AGM meeting will take place on Sunday 14th March. Please note that this is NOT the first Sunday of the month.

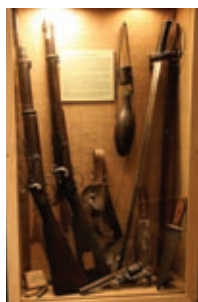


Tawhiti Museum - Hawera

Over the holiday period we made a trip to the Tawhiti Museum on the outskirts of Hawera. This is claimed to be the largest private museum in the country and is certainly a tribute to the founder who converted a small collection of artifacts into an impressive historical time machine that depicts life in New Zealand from earliest settlers, particularly in the South Taranaki region where there was a good cross section of the activities and difficulties our early pioneers endured. There are numerous displays depicting various sections of activity from warfare, transport, shipping, farming, mining, timber milling and everything in between. Much of this is illustrated in dioramas in miniature that were created by the very talented owner, although I understand our own Tim Ryan has been of some assistance in this field, which we know he is also very proficient at. The life sized displays are excellent and a Museum information sheet states that friends, relatives and locals have been coerced into allowing castings to be made of their features to create many of these figures, accordingly there are no two the same. The exhibits include details of the type of warfare encountered in the heavy bush covered Taranaki district when British Troops and Colonial Forces endeavoured to subdue the local hostiles and there are good displays of the conditions of the time as well the arms and accoutrements used by both sides. The Enfield Pattern 52 muzzle loading rifle, Terry Capping Breech Loading rifle and the Snider rifle as well as the trusty old double barrel shotgun all played significant roles during the Maori Wars and there was a good display of these with ample descriptions. Various other exhibits of full sized figures included replica firearms, camp sites and living conditions that all looked most realistic.

The Museum is well worth a visit and particularly covers South Taranaki which was rich in history from the earliest times of difficult transport and communications to the Second World War and beyond when the area went through much economic and social change. It's a pity the powers that be at our National Museum Te Papa, do not seem to be able to illustrate our history quite as effectively as this talented entrepreneur has so successfully achieved on a small scale.

Rex



Subs for 2010

Subscriptions are now due and accounts were posted with the last newsletter. If you have not already paid yours please attend to this as soon as possible.

Family shoot 14th Feb

Once again we had a lovely day and people were waiting at the gate on my arrival. We quickly had the range area set out and the catering equipment ready for our catering crew. A big thanks must once again go out to all who helped with the day. We often take it for granted that food, drinks and the many other arrangements "just happen". The catering team once again put on a first class lunch with heaps of BBQ sausages, burgers, coleslaw's, salads and refreshments. The shooters and visitors had a good day with some very good shooting from some first timers.

Scores are as follows:

Under 15 years. Liam P	4 chickens
	Kieran 4 chickens
	Alex Mc 4 chickens
	Thomas G 3 chickens
	Michael G 3 chickens
	Sam Mc 3 chickens
Iron chicken trophy.	1ST Tony B 5 chickens
	2nd = Neville A
	Phil Mc
	Henry
	Tony C
	3rd many others
Ladies Event	Sandy C 1st = 6 chickens
	Barbara P 6 chickens
	Angela H 2nd = 5 chickens
	Fiona Mc 5 chickens
75 Meters shooter)	1st Tee 6 chickens (1st time shooter)
	2nd = Shayne P
	Tony C
	Barbara P
	3rd many
Shot gun event	1st Neville A.
	2nd many others
Teams event	winning team George S, Brian J, Tony C, Steve P.

Interesting enough, three of the winning team were using rifles with open iron sights and they just kept the wooden cube moving, very well done. Alwyn

Trip to Christchurch

We are looking at taking a branch trip to the Mainland militaria show, and to look at some other military places of interest. Places of interest include, Gun emplacements at Godley Heads, and an aviation Museum. We are looking at flying down on Friday, 23rd of July, and come back on Sunday, 25th July. The members of the Canterbury Branch have very kindly offered to help with transport and some accommodation. If you are interested, Please contact Dave C for further details.

Range day

We have got Sunday, 21st of march booked for a club range day. We will have .22 cal rifles in the morning, and some clay targets for the shotgun people. Mark G. may come along and give a wee bit of professional advice on the art of becoming a proficient clay target shooter.

A.G.M 2010

Once again we are asking for people that would like to stand for a committee position and help with the running of the club. If you have that desire, please contact Alwyn.



Wellington Branch AGM

The Wellington Branch is having its AGM meeting on Sunday the 14th of March. Please note that this is NOT the first Sunday of the month. We will be having a buy, sell and swap followed by the formal meeting. Setup from 11.00am with the meeting getting underway at approximately 1.00pm